

SPEC SHEET + MEASUREMENTS



Eddie Bauer® Rugged Ripstop Soft Shell Jacket. EB534

Product photo



A rugged soft shell for hitting the trails or the town. A tough, textured ripstop shell and a warm plush high-pile fleece lining make this a versatile and technical jacket.

- 100% polyester woven ripstop shell bonded to a water-resistant laminated film and 100% polyester high-pile fleece lining
- 5K/5K waterproof/breathable fabric with two-way stretch
- Reverse coil zippers
- Front zippered pockets
- Welded zippered pocket on left sleeve
- Decoration access pocket
- Open cuffs with woven contrast insets
- Open hem with locking drawcords
- Contrast embroidered Eddie Bauer logo on left sleeve

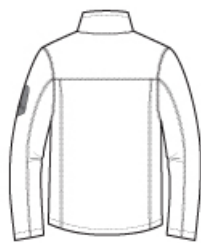
CARE INSTRUCTIONS

Machine wash cold with like colors. Only Non-chlorine bleach when needed. Tumble dry low. Cool iron if necessary.

Sketches



front



back

SPEC SHEET + MEASUREMENTS



Eddie Bauer® Rugged Ripstop Soft Shell Jacket. EB534

PRODUCT MEASUREMENTS

	XS	S	M	L	XL	2XL	3XL	4XL
Chest	19 3/4	21 1/4	22 3/4	24 1/4	25 3/4	27 1/4	29 1/4	31 1/4
Body Length at Front	27 1/2	28 1/2	29 1/2	30 1/2	31 1/2	32 1/2	33	33 1/2
Sleeve From Shoulder	34 1/2	35 1/4	36	36 3/4	37 1/2	38 1/4	39	39 3/4

Chest: Measured across the chest one inch below armhole when laid flat.

Body Length at Front: Measure from high point shoulder to lowest point of hem at front.

Sleeve From Shoulder: Measured from high point of shoulder to finished hem at sleeve.

SIZE CHARTS

	XS	S	M	L	XL	2XL	3XL	4XL
Chest	32-34	35-37	38-40	41-43	44-46	48-50	52-54	55-57

SPEC SHEET + MEASUREMENTS



Eddie Bauer® Rugged Ripstop Soft Shell Jacket. EB534

HOW TO MEASURE



CHEST

Measure under the arm and around the fullest part of the chest with arms down, keeping tape horizontal.

COLORS



Black



Canteen Grey



Grey Steel